

Option 1 = Midi/DMX with Laptop      Option 2 = Media server controlled



(1a)



(1b)



(1b)

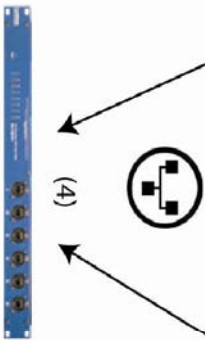
Optional controls  
Necessary controls



(2)



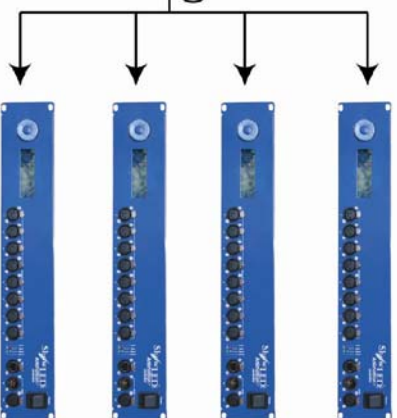
(3)



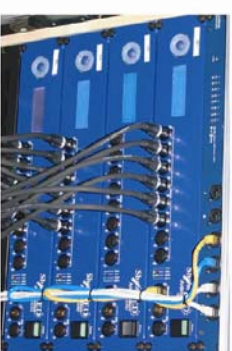
(4)



(5)



==



(7)



(6)



ShowLED Animation legend = Technical specifications of the Animation setup.

- (1a) **Midi controller.**  
Not supplied with ShowLED Animation starcloth.
- (1b) **Lighting desk with DMX out signal.**  
Not supplied with ShowLED Animation starcloth.
- (2) **Portable computer** with Arkaos VJ DMX Version 3.6 software and ShowLED Animation projector and designer software installed.  
All software needed to control the ShowLED Animation curtain is included in the purchase price.  
More information on Arkaos software and a trial version can be downloaded at [www.arkaos.net](http://www.arkaos.net) .  
Laptop not included in ShowLED Animation pricing.
- (3) **Maxedia Media server.**  
Not included in the purchase price of the ShowLED Animation curtain .  
More information about the Maxedia Media server can be found on [www.maxedia.com](http://www.maxedia.com) .
- (4) **Luminex gigabit switch.**  
The laptop or Media server needs to be connected with an Ethernet cable to the ShowLED controller.  
If more controllers are in process they need to be linked to each other via an Ethernet hub. This Ethernet hub is the Luminex Gigabit Switch and is mounted in the standard 19” touring rack.  
More info on the Luminex Gigabit Switch can be found on [www.luminex.be](http://www.luminex.be) .
- (5) **ShowLED Animation controller.**  
Custom build controller with following specifications;

**Weight**

Approx. 4 kg.

**Dimensions**

45 cm. width x 8,5 cm. height x 13,5 cm. length

**Input**

- Supply voltage: 90 - 250 Vac
- PFC (Power Factor Correction) circuit present
- Input current: 2.4 A at 230 Vac
- Input power: 450 Watt

## **Output**

- Output Voltage: 24 V
- Total Output Power: 400 Watt

Each controller can operate a maximum of 1024 LED's.

A single controller is stored in a custom made, truss mountable flightcase.

## **Weight**

Approx. 6 kg. (without controller)

## **Dimensions**

53 cm. width x 12 cm. height x 39 cm. length

If there is more than 1 controller supplied the controllers are mounted in a custom made touring rack.

## **Weight (2 controllers mounted)**

46 kg.

## **Dimensions**

59 cm. width x 50 cm. height x 81 cm length.

- (6) **Power switch.**  
When the controllers are mounted in a touring rack, main power can be turned on/off by using the power switch.
- (7) The controllers are connected to the curtains by custom made **extension wires**.

## **ShowLED Animation starcloths**

The "standard" ShowLED Animation starcloths have a dimension of 4m x 9m, 12m x 3m and 5m x 7m. These curtains have 1024 LED's in total so each curtain needs to be connected to a single controller.

## **LED's**

- High quality RGB LED's
- Intelligent LED socket – Individually controllable
- 16 Million combinations of colour and intensity
- Standard density of 30 LEDs/m<sup>2</sup>
- up to 180° LED viewing angle
- superior light output
- Luminous Intensity 1.4 cd
- Lifespan 20 000 – 100 000 burning hours
- Flexible socket cables
- LED's are attached to fabric via patented Velcro attachment system

## **Fabric**

### *Molton Fabric, black*

- Inherently Flame Retardent B1, M1
- low shrinkage level
- 300cm wide
- 300 gr/m<sup>2</sup> (lightweight)

### *Dekotaft Lining, black*

- Inherently Flame Retardent B1
- 300cm wide
- 70 gr/m<sup>2</sup> (lightweight)

### *Finishing*

- ShowLED Starcloths are standard finished with hook/loop fasteners all around for easy assembly of the cloths
- Starcloths can be hung in both directions
- Holes every 25cm for attachment to truss or bar via plastic tie wraps
- Alternative finishing upon request.

Animation curtains are shipped in a custom made ShowLED flight case

### **Weight**

Empty = Approx. 35 kg.

### **Dimensions**

60 cm. width x 65 cm. height x 100 cm. depth.